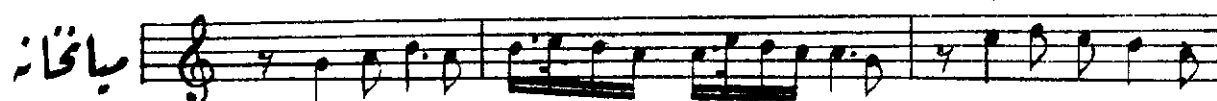
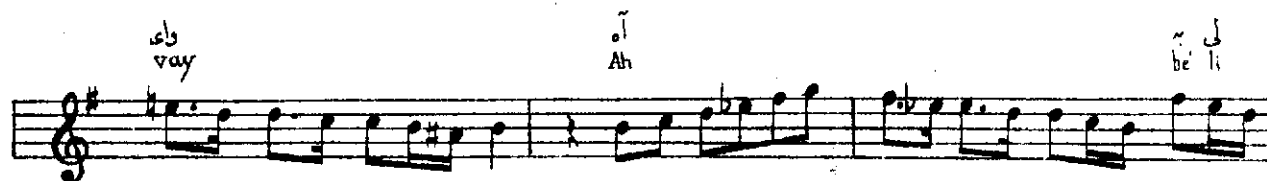
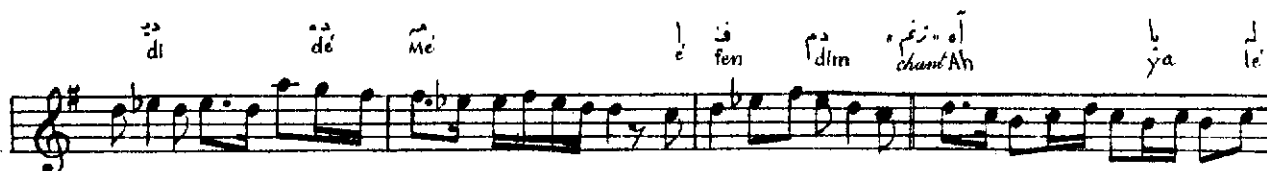


ذكره افنديك هرا من بيتك



The image displays a musical score for the song "L'Espresso" by Georges Bizet. The score is written for a vocal line and includes Arabic lyrics. The music is in 2/4 time and features a key signature of one sharp (F#). The lyrics are written in Arabic script above the notes, with phonetic transliterations provided below. The score is divided into several lines, each corresponding to a measure or a group of measures. The lyrics include: "mi", "quén", "dim", "nar", "que", "quén", "dim", "ag", "la", "rim", "é", "fen", "dim", "Ah", "ya", "lé", "lél", "li", "ter", "yé", "lé", "lél", "li", "lé", "ré", "yé", "léi", "lé", "lé", "lé", "lé", "lé", "lé", "lé", "li", "vay", "Ah", "bé", "li", "dja", "ni", "mon", "Hey", "dja", "nim".

Cüneyt KOSAL